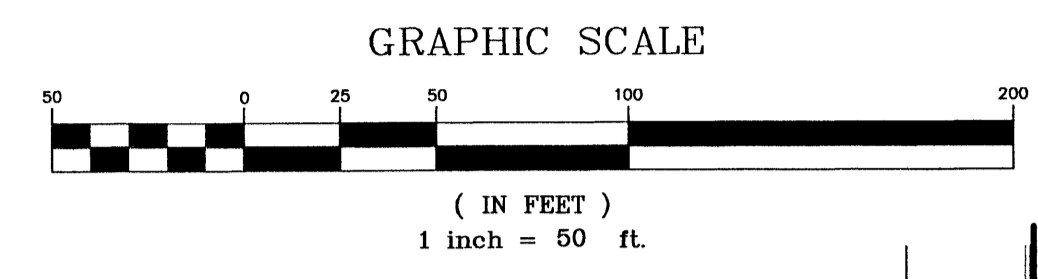
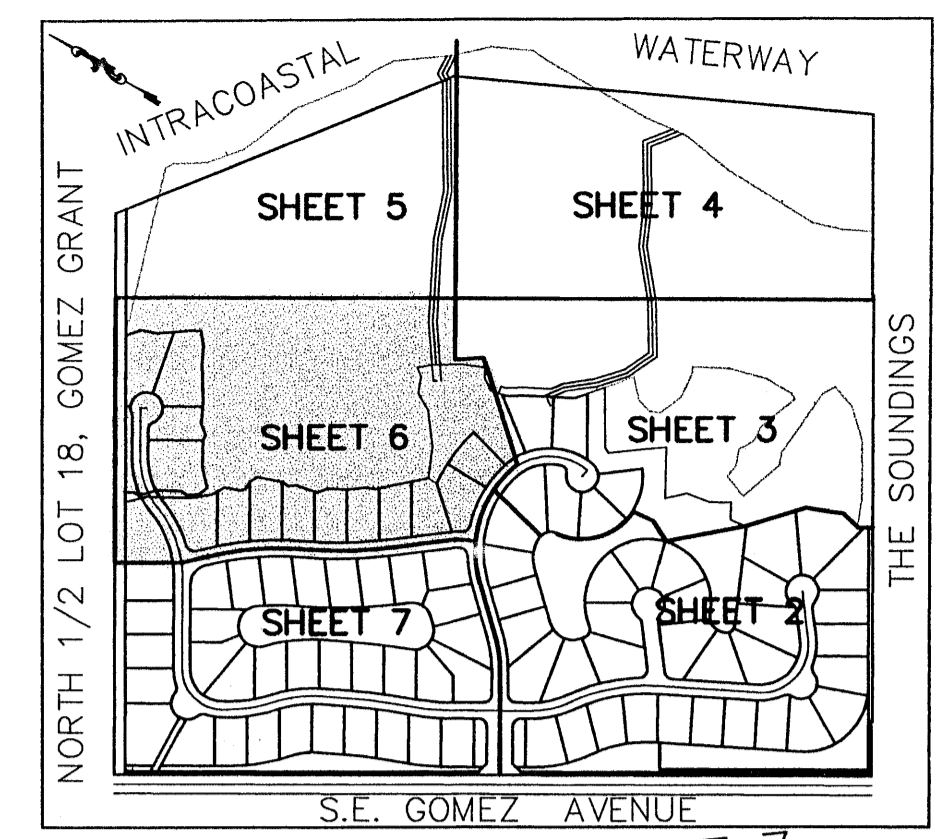
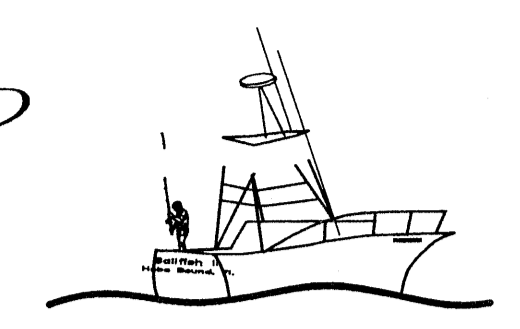


This plat was filed per record in plat book 14 page 69 Martin County, Florida public records this day of July, 1999

Maisha Stiller
Circuit Court
Martin County
by J. Wood, D.E.

Plat Of Osprey Cove Yacht Club

A REPLAT OF LOTS 15, 16, 17 AND THE SOUTH 1/2 OF LOT 18 OF GOMEZ GRANT, PLAT BOOK 1, PAGE 80, AND A REPLAT OF TRACT-A OF THE SOUNDINGS, PLAT BOOK 5, PAGE 3 TOWNSHIP 39 SOUTH, RANGE 42 EAST, MARTIN COUNTY, FLORIDA



CURVE DATA LEGEND
Δ = DELTA (ANGLE OF ARC)
R = RADIUS OF ARC
L = LENGTH OF ARC

POINT OF BEGINNING
⊕ PEDESTRIAN ACCESS "C"

SEE SHEET 5 OF 7

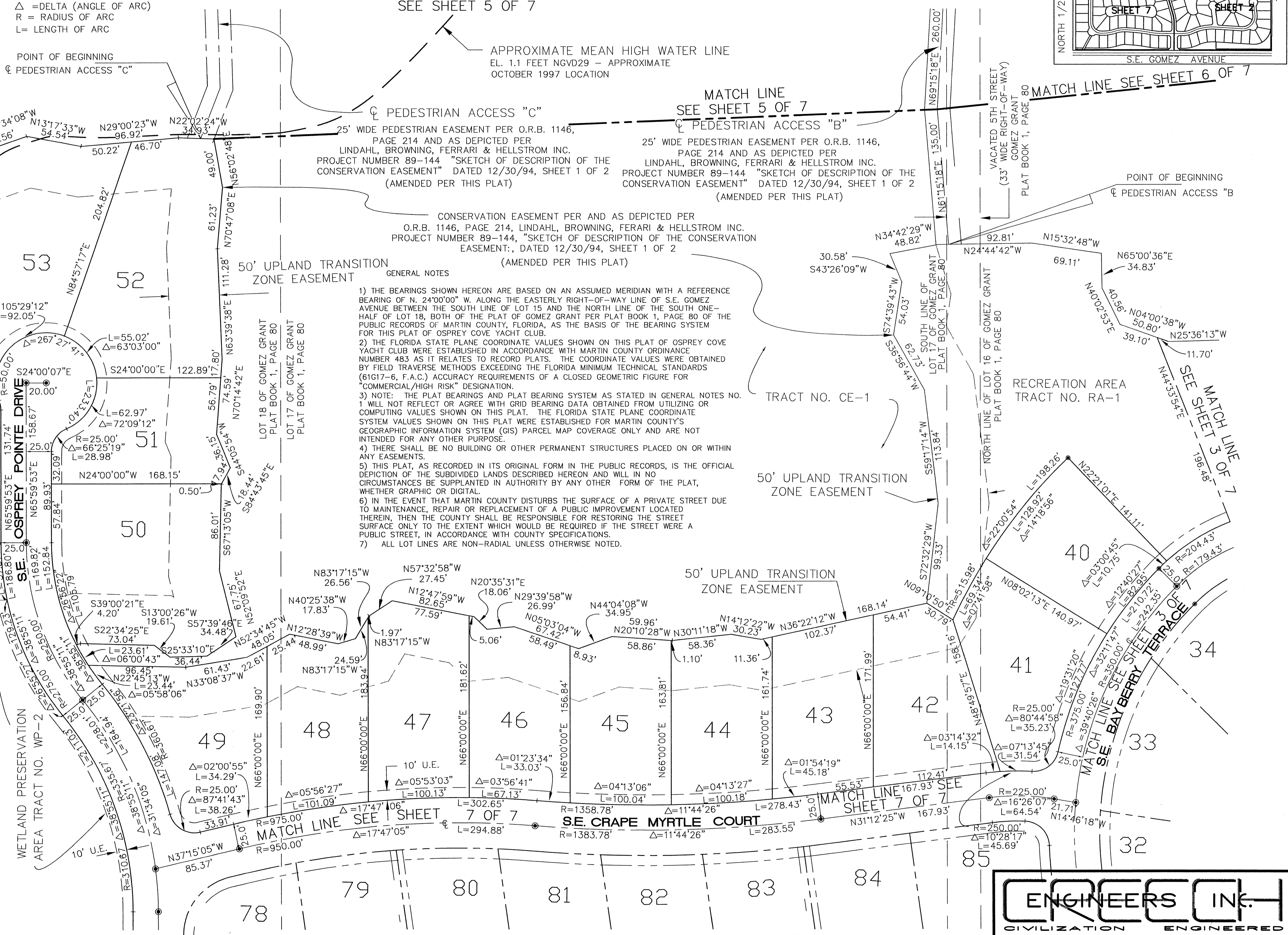
APPROXIMATE MEAN HIGH WATER LINE
EL. 1.1 FEET NGVD29 - APPROXIMATE
OCTOBER 1997 LOCATION

MATCH LINE
SEE SHEET 5 OF 7

MATCH LINE SEE SHEET 6 OF 7

NORTH 1/2 OF LOT 18
GOMEZ GRANT
PLAT BOOK 1, PAGE 80
MARTIN COUNTY, FLORIDA

- LEGEND**
- D.E. DRAINAGE EASEMENT
 - U.E. UTILITY EASEMENT
 - D.&M.E. DRAINAGE AND MAINTENANCE EASEMENT
 - O.R.B. OFFICIAL RECORDS BOOK
 - PERMANENT REFERENCE MONUMENT (P.R.M.) SET 4"x4" CONCRETE MONUMENT WITH DISK STAMPED "PRM LS 4460"
 - O/A OVERALL
 - EL ELEVATION (EXPRESSED IN U.S. SURVEY FEET)
 - NGVD29 NATIONAL GEODETIC VERTICAL DATUM OF 1929, REFERENCED TO MARTIN COUNTY VERTICAL CONTROL NETWORK UTILIZING BENCHMARKS "SABAL-G" (EL. 9.048 U.S. FEET) AND "WIND-G" (EL. 8.316 U.S. FEET)
 - PERMANENT CONTROL POINT (P.C.P.) (1/4" PK-NAIL WITH BRASS DISK STAMPED "PCP LS 4460")



GENERAL NOTES

- 1) THE BEARINGS SHOWN HEREON ARE BASED ON AN ASSUMED MERIDIAN WITH A REFERENCE BEARING OF N. 24°00'00" W. ALONG THE EASTERLY RIGHT-OF-WAY LINE OF S.E. GOMEZ AVENUE BETWEEN THE SOUTH LINE OF LOT 15 AND THE NORTH LINE OF THE SOUTH ONE-HALF OF LOT 18, BOTH OF THE PLAT OF GOMEZ GRANT PER PLAT BOOK 1, PAGE 80 OF THE PUBLIC RECORDS OF MARTIN COUNTY, FLORIDA, AS THE BASIS OF THE BEARING SYSTEM FOR THIS PLAT OF OSPREY COVE YACHT CLUB.
- 2) THE FLORIDA STATE PLANE COORDINATE VALUES SHOWN ON THIS PLAT OF OSPREY COVE YACHT CLUB WERE ESTABLISHED IN ACCORDANCE WITH MARTIN COUNTY ORDINANCE NUMBER 483 AS IT RELATES TO RECORD PLATS. THE COORDINATE VALUES WERE OBTAINED BY FIELD TRAVERSE METHODS EXCEEDING THE FLORIDA MINIMUM TECHNICAL STANDARDS (61G17-6, F.A.C.) ACCURACY REQUIREMENTS OF A CLOSED GEOMETRIC FIGURE FOR "COMMERCIAL/HIGH RISK" DESIGNATION.
- 3) NOTE: THE PLAT BEARINGS AND PLAT BEARING SYSTEM AS STATED IN GENERAL NOTES NO. 1 WILL NOT REFLECT OR AGREE WITH GRID BEARING DATA OBTAINED FROM UTILIZING OR COMPUTING VALUES SHOWN ON THIS PLAT. THE FLORIDA STATE PLANE COORDINATE SYSTEM VALUES SHOWN ON THIS PLAT WERE ESTABLISHED FOR MARTIN COUNTY'S GEOGRAPHIC INFORMATION SYSTEM (GIS) PARCEL MAP COVERAGE ONLY AND ARE NOT INTENDED FOR ANY OTHER PURPOSE.
- 4) THERE SHALL BE NO BUILDING OR OTHER PERMANENT STRUCTURES PLACED ON OR WITHIN ANY EASEMENTS.
- 5) THIS PLAT, AS RECORDED IN ITS ORIGINAL FORM IN THE PUBLIC RECORDS, IS THE OFFICIAL DEPICTION OF THE SUBDIVIDED LANDS DESCRIBED HEREON AND WILL IN NO CIRCUMSTANCES BE SUPPLANTED IN AUTHORITY BY ANY OTHER FORM OF THE PLAT, WHETHER GRAPHIC OR DIGITAL.
- 6) IN THE EVENT THAT MARTIN COUNTY DISTURBS THE SURFACE OF A PRIVATE STREET DUE TO MAINTENANCE, REPAIR OR REPLACEMENT OF A PUBLIC IMPROVEMENT LOCATED THEREIN, THEN THE COUNTY SHALL BE RESPONSIBLE FOR RESTORING THE STREET SURFACE ONLY TO THE EXTENT WHICH WOULD BE REQUIRED IF THE STREET WERE A PUBLIC STREET, IN ACCORDANCE WITH COUNTY SPECIFICATIONS.
- 7) ALL LOT LINES ARE NON-RADIAL UNLESS OTHERWISE NOTED.

ENGINEERS INC.
CIVILIZATION ENGINEERED

600 S. PARROTT AVE. STUART, FLORIDA 33472
PHONE (941)763-5050
FAX (941)763-0810

203 WEST 3RD STREET MELBOURNE, FLORIDA 32904
PHONE (561)283-1413
FAX (561)220-7881

P.O. BOX 410908
PHONE (407)779-3723
FAX (407)779-2184